



POVIJESNE DRVENE KONSTRUKCIJE
GRADA RIJEKE – nasljeđe I. industrijskog
doba i afirmacije grada kao lučkog središta
Austroougarskog carstva

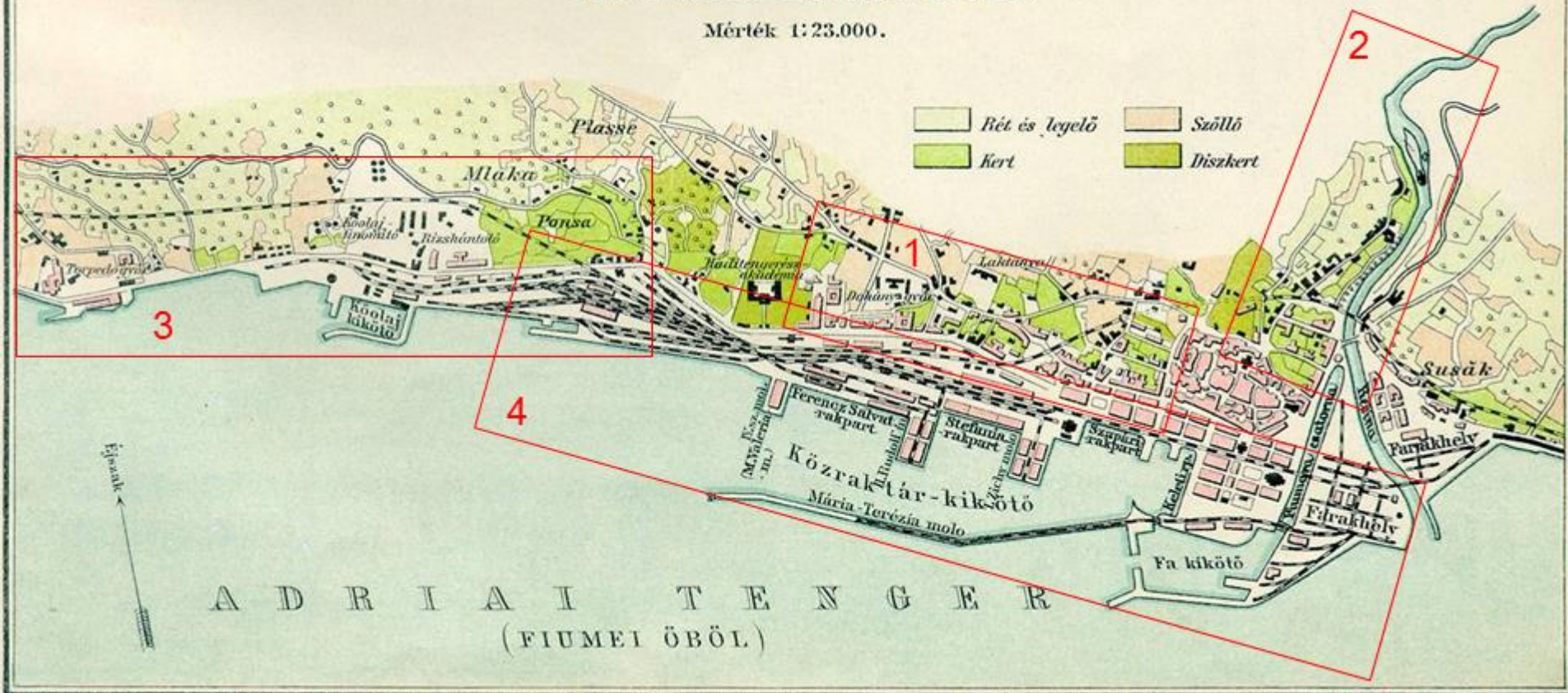
Adriana Bjelanović, Nana Palinić

izv.prof.dr.sc. Adriana Bjelanović, dipl.ing.građ., Građevinski fakultet, Rijeka

izv.prof.dr.sc. Nana Palinić, dipl.ing.arh., Građevinski fakultet, Rijeka

FIUME és KIKÖTŐJE.

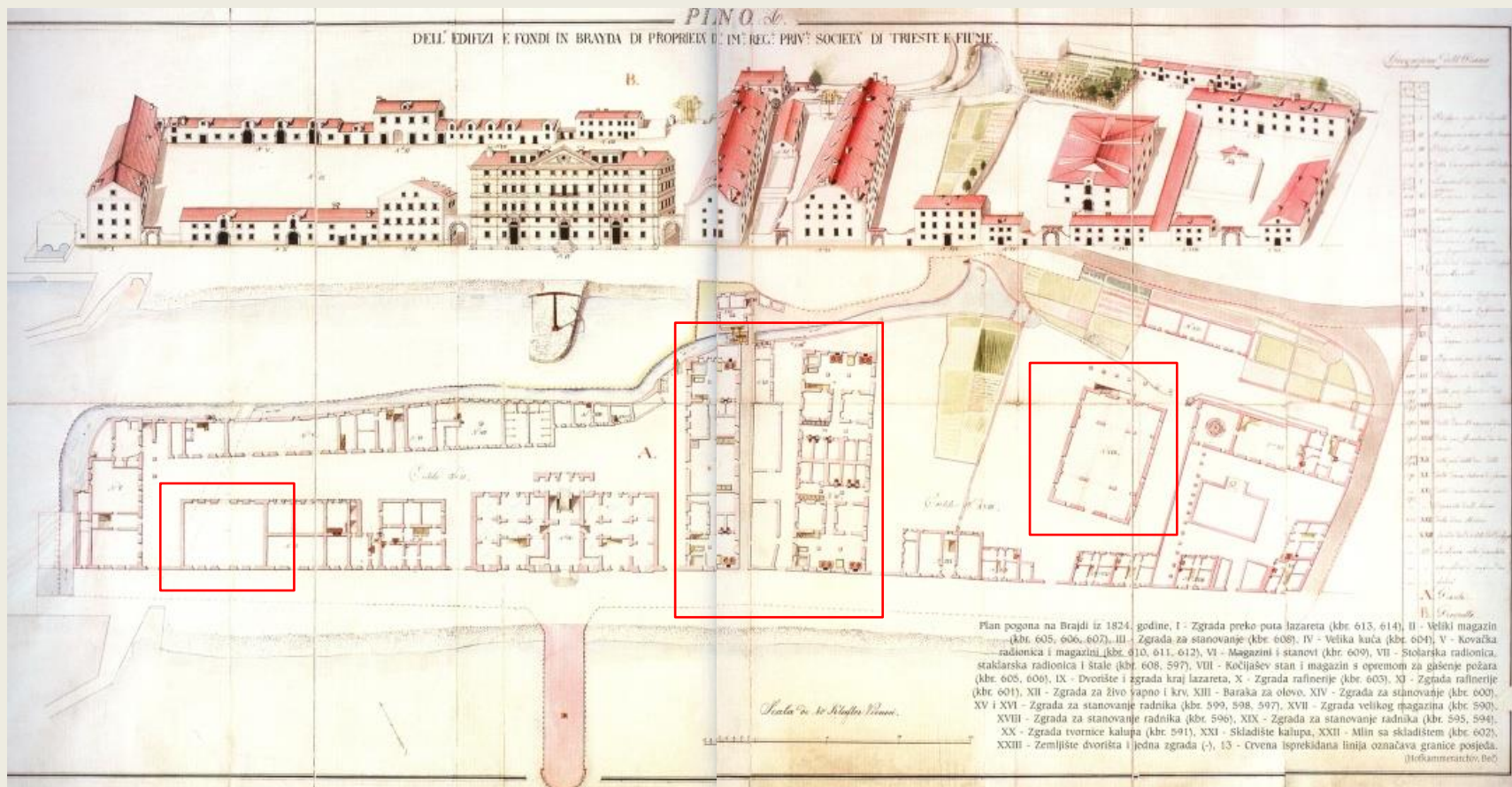
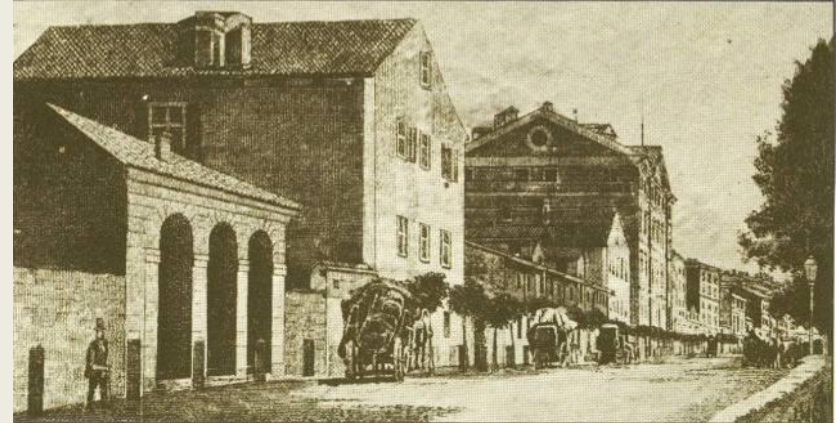
Mérték 1:23.000.

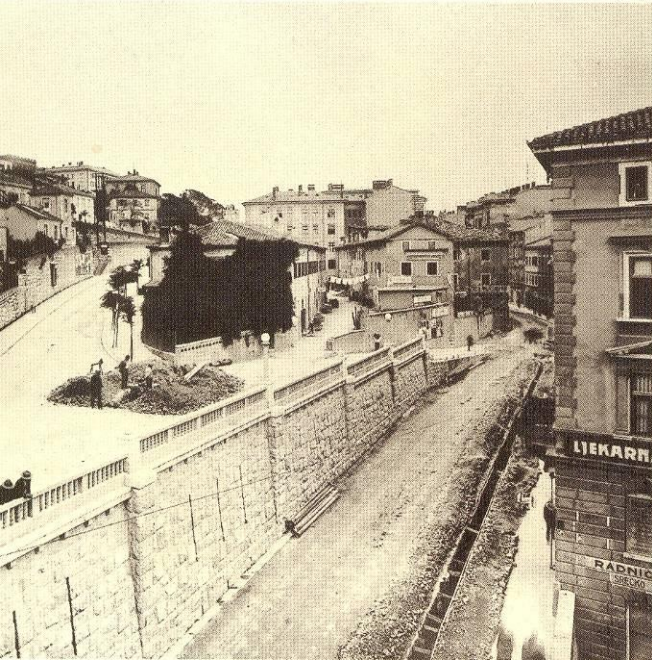


Rijeka - industrijske zone: 1. centralna; 2. istočna: porječje Rječine; 3. zapadna: Industrijska ulica; 4. južna: lučko područje

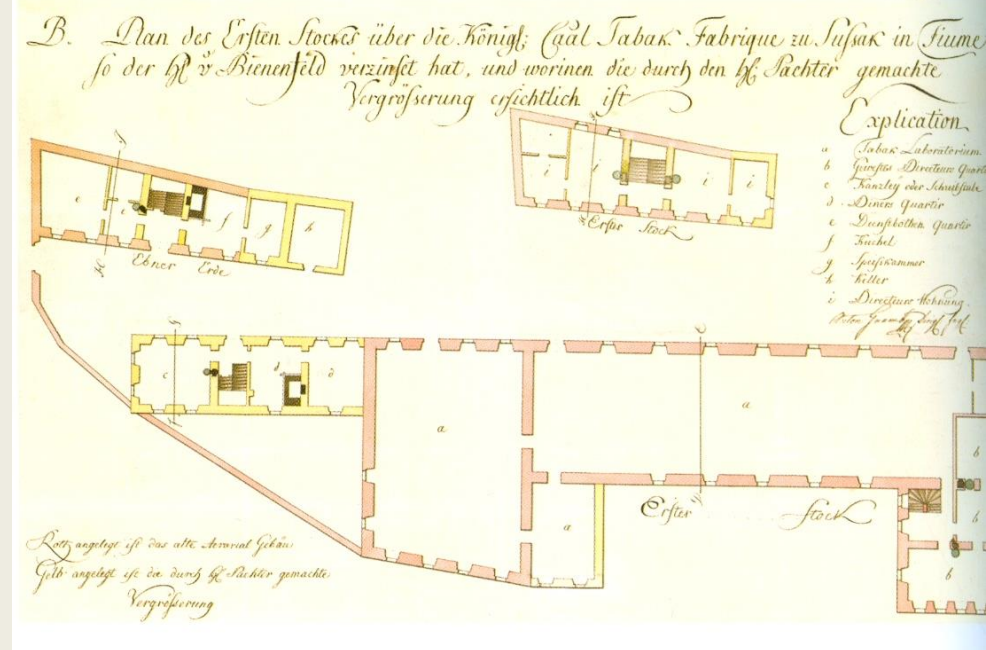
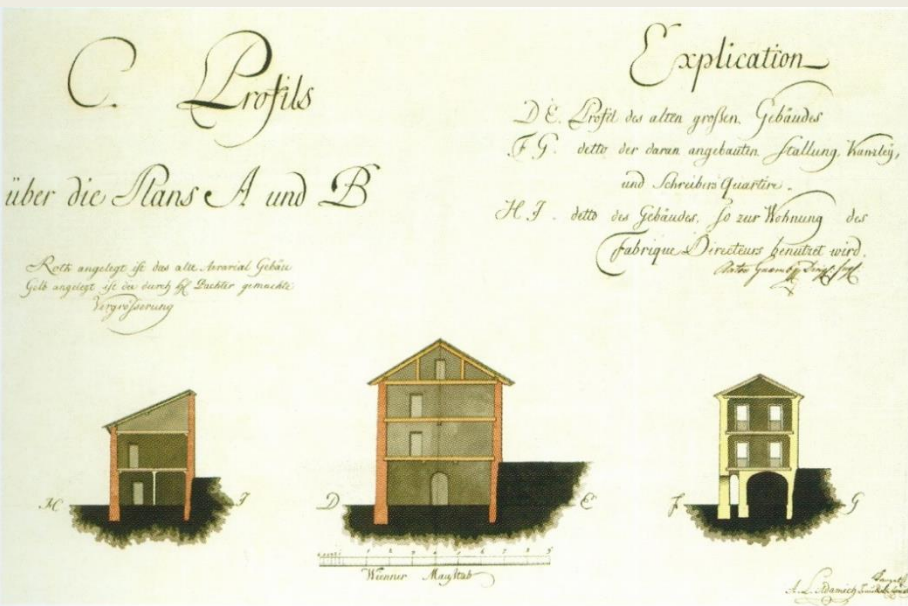
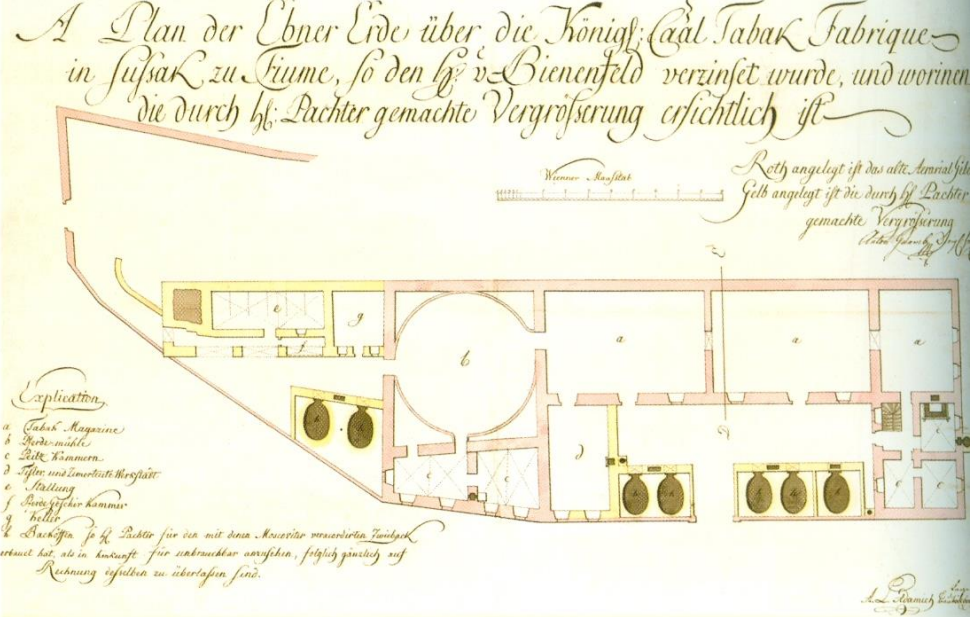


Kompleks
Rafinerije
šećera,
1750.





Komorska
tvornica
duhana
Bienenfeld i
Schram,
A. Gnamb,
1791.



Povijesne drvene konstrukcije

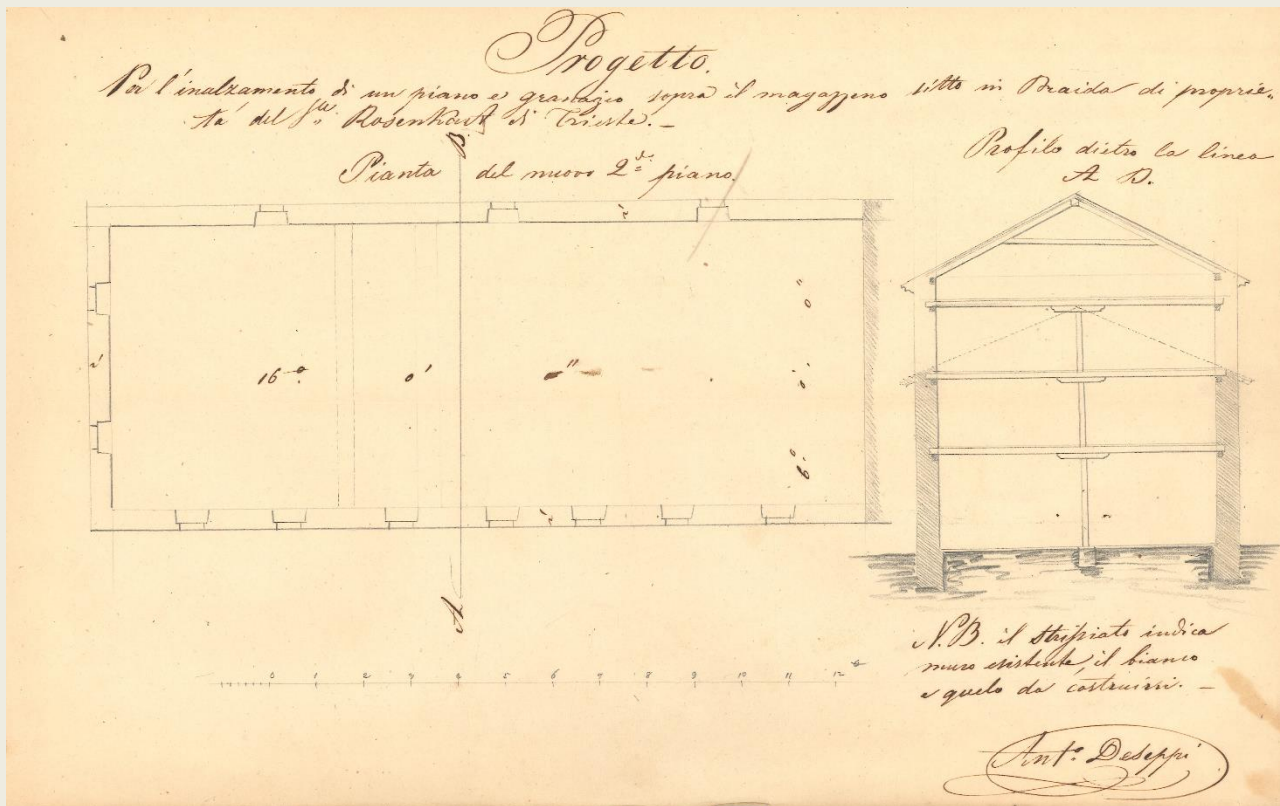
- Krovne konstrukcije
 - Roženička i podroženička tradicionalna krovišta
 - Rešetkaste visulje
- Stropne konstrukcije
 - Unutrašnjih skeletnih sustava sa stupovima od lijevanog željeza





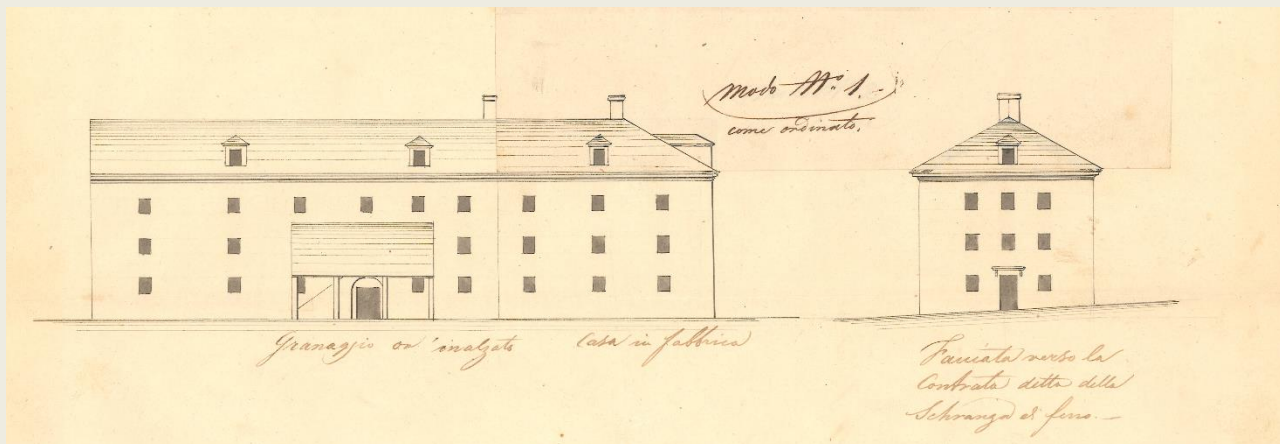
Tvornica
papira,
1821.





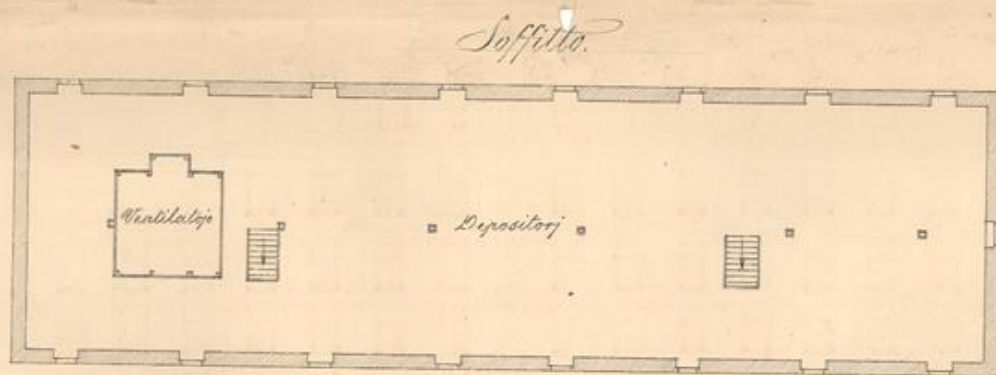
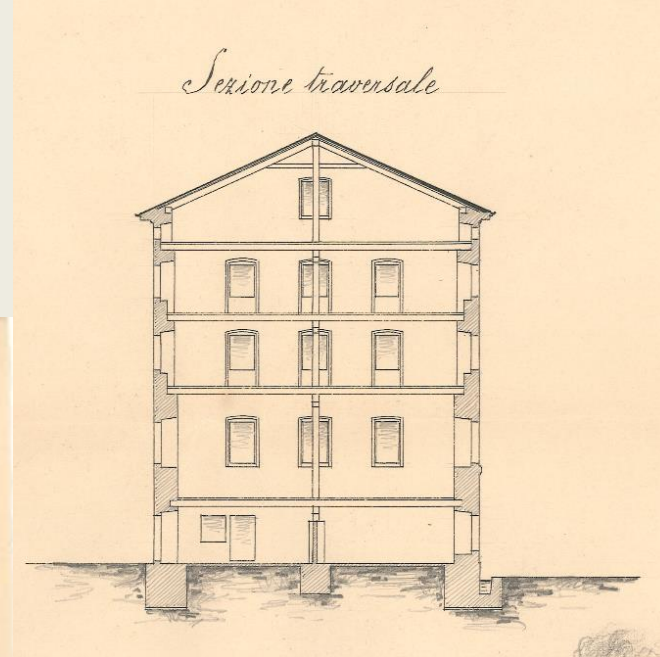
Skladište Rosengart,
 Antonio Deseppi,
 1844.

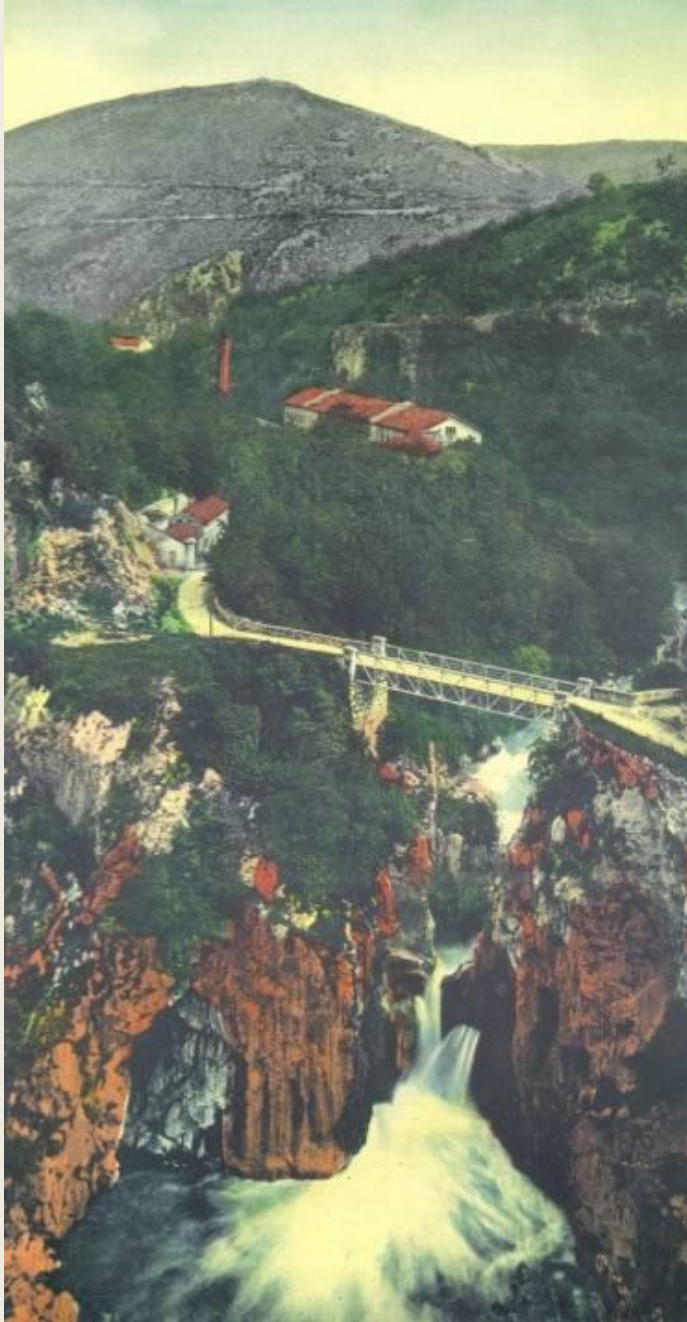
- Drvena skeletna unutrašnja konstrukcija –
- Krovšte – jednostruka stolica bez kosnika (stolica s izmaknutim klijestima / visina potkrovlja odgovara visinama etaža / sljemena greda i donje podrožnice na nadozidu)



Paromlin Školjić, Ignazio Rossi, 1857.

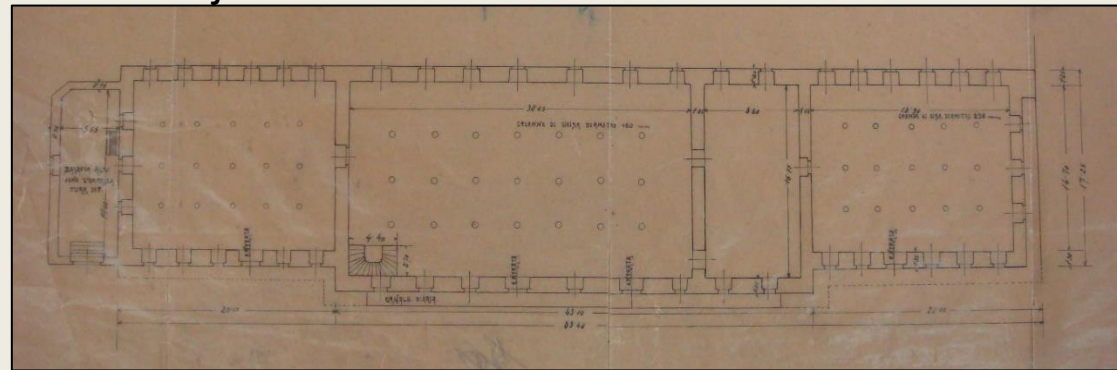
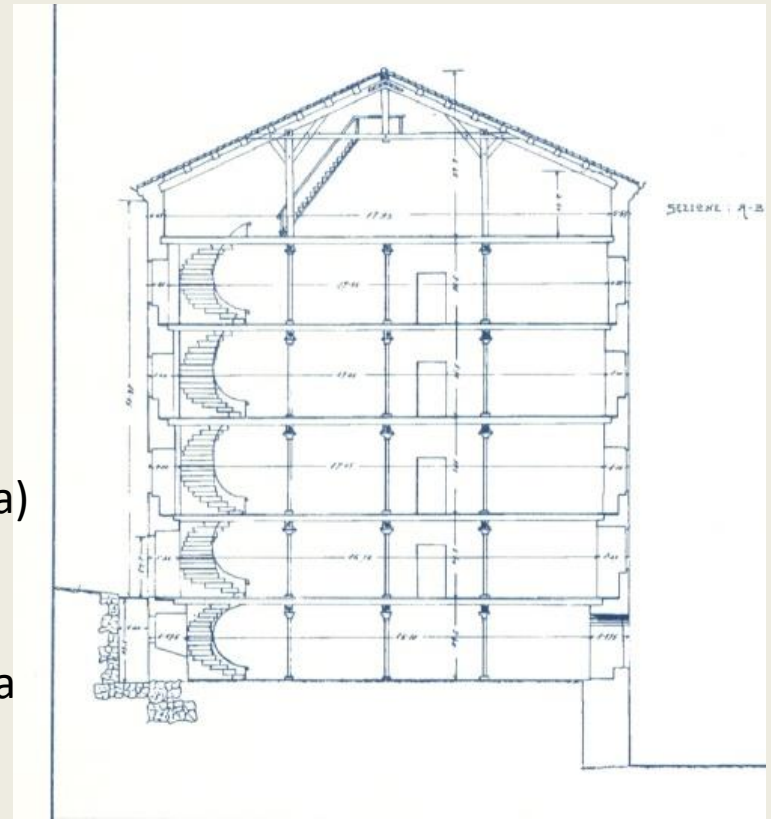
- Drvena skeletna konstrukcija i krovšte – slični konstrukcijama Skladišta Rosengart

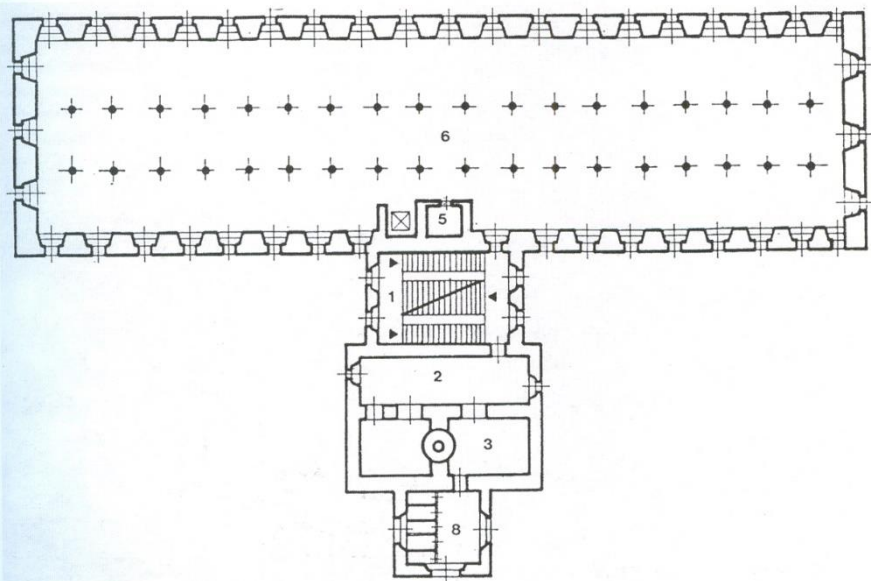




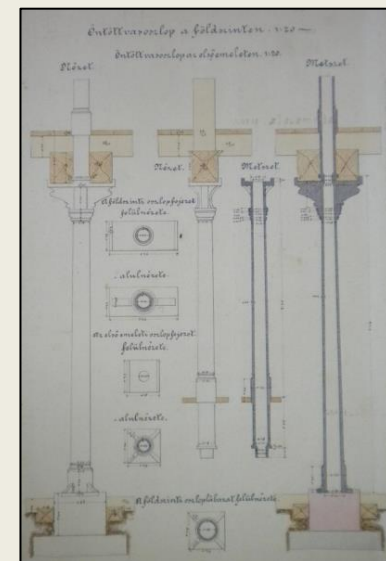
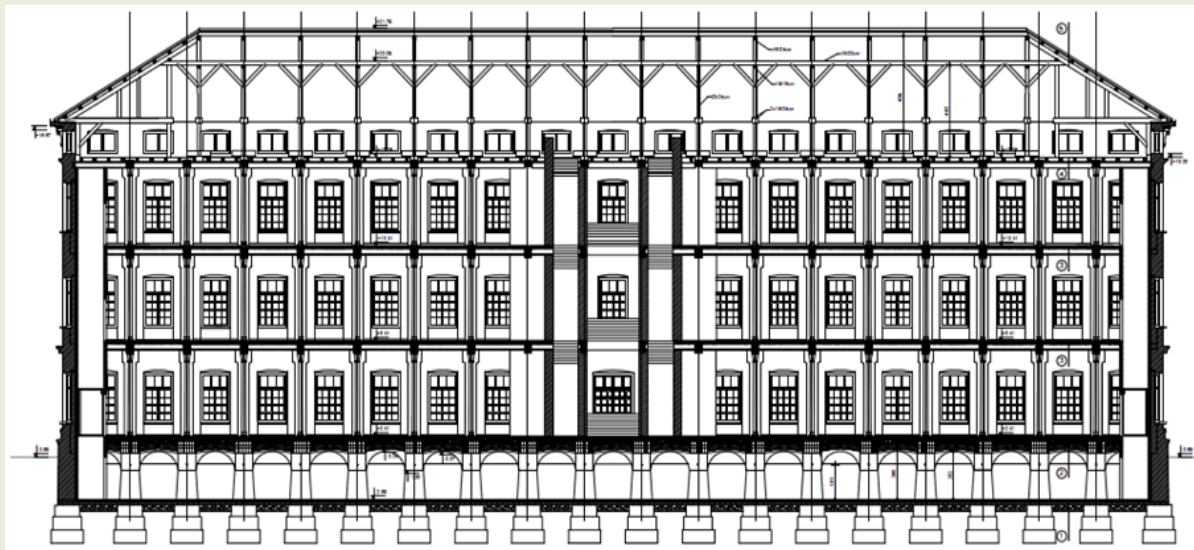
Mlin Žakalj, rekonstrukcija, 1865.

- Drvena stropna konstrukcija (uzdužne podvlake iznad stupova od lijevanog željeza)
- Krovšte – dvostruka netipična stolica s visuljom) i sekundarnom konstrukcijom





Tvornica duhana - T-objekt, 1867.

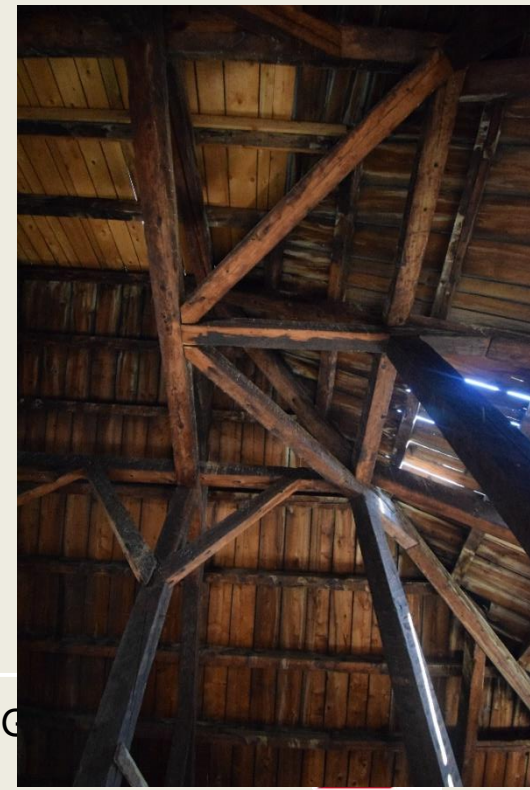


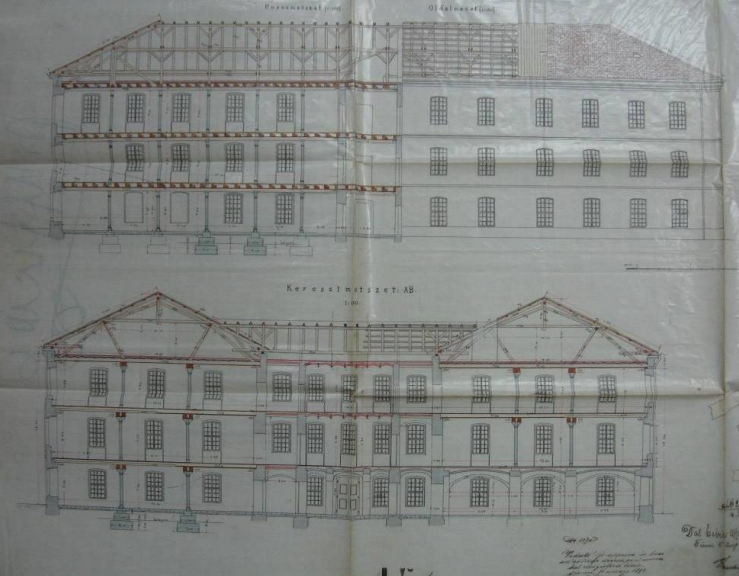


- Četverostrano drveno krovništvo – uglavnom izvorna konstrukcija



- Rogovi iznad srednjih i donje podrožnice / vertikalnih stupića iznad donjih kliješta stolica i kosnika
- Nosivi sustav – prilagodba tradicionalnog
 - Rogovi iznad stolica
 - Daščani pokrov iznad sekundarne konstrukcije
 - Donja dvodijelna kliješta povezuju rogove i parove krajnjih i srednjih stolica / s kosnicima formiraju stabilan sustav
 - Gornja kliješta povezuju parove rogova i srednjih stolica.
 - Na zabatnim dijelovima krovništva – slični nosivi sustavi i način stabilizacije.





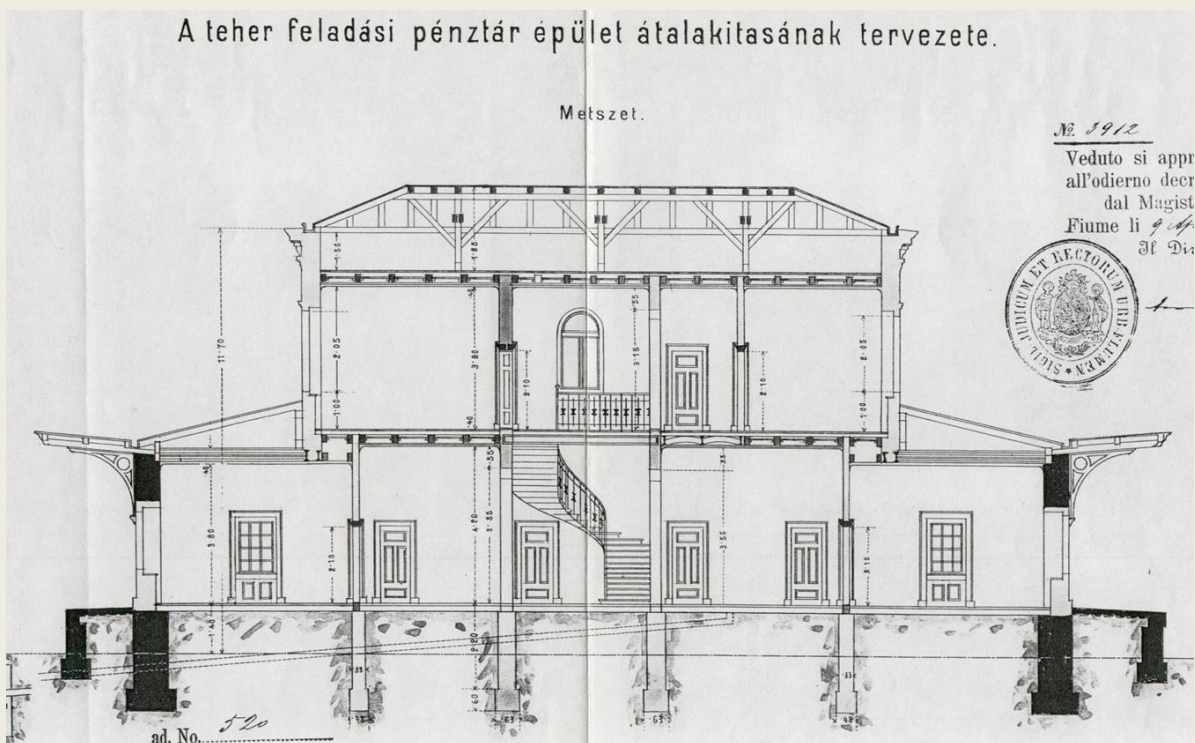
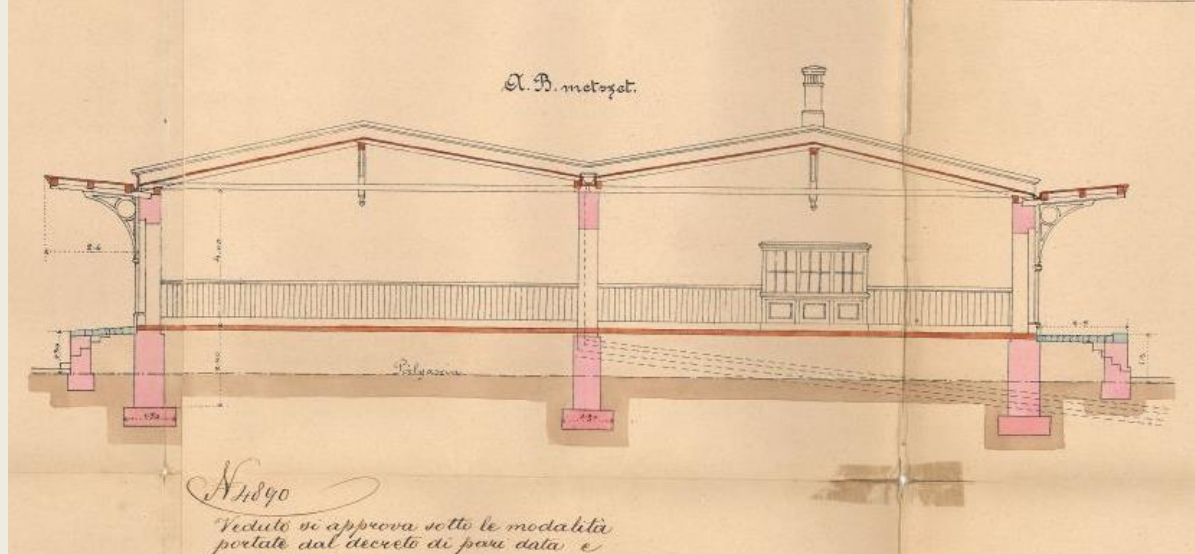
Tvornica duhana - H-objekt, rekonstrukcija, A. Hajnal, J. Huszar, J. Popp, 1892.

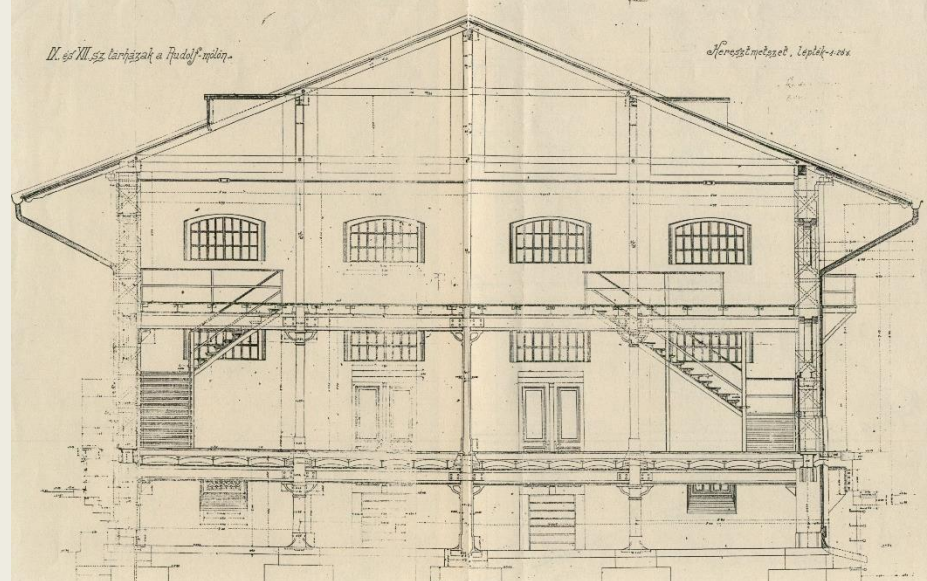
- Drveno krovništvo – četverostrano / kombinacija dvostrukih kosih stolica i jednostrukih visulja
- Oslonci stolica – iznad nizova s željeznih stupova na rasterima 5,0 m x 3,0 – 4,25 m
- Osni razmak podrožnica – 10 m



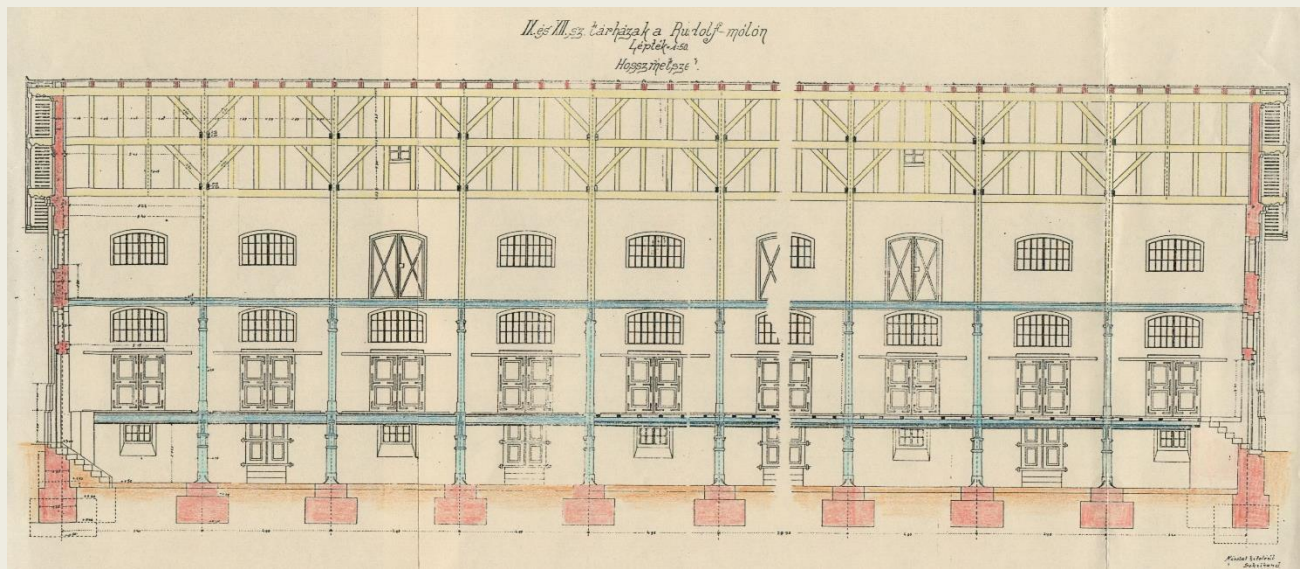


Željezničko skladište 31,
Richnitz, 1881., F. Pfaff, 1890.

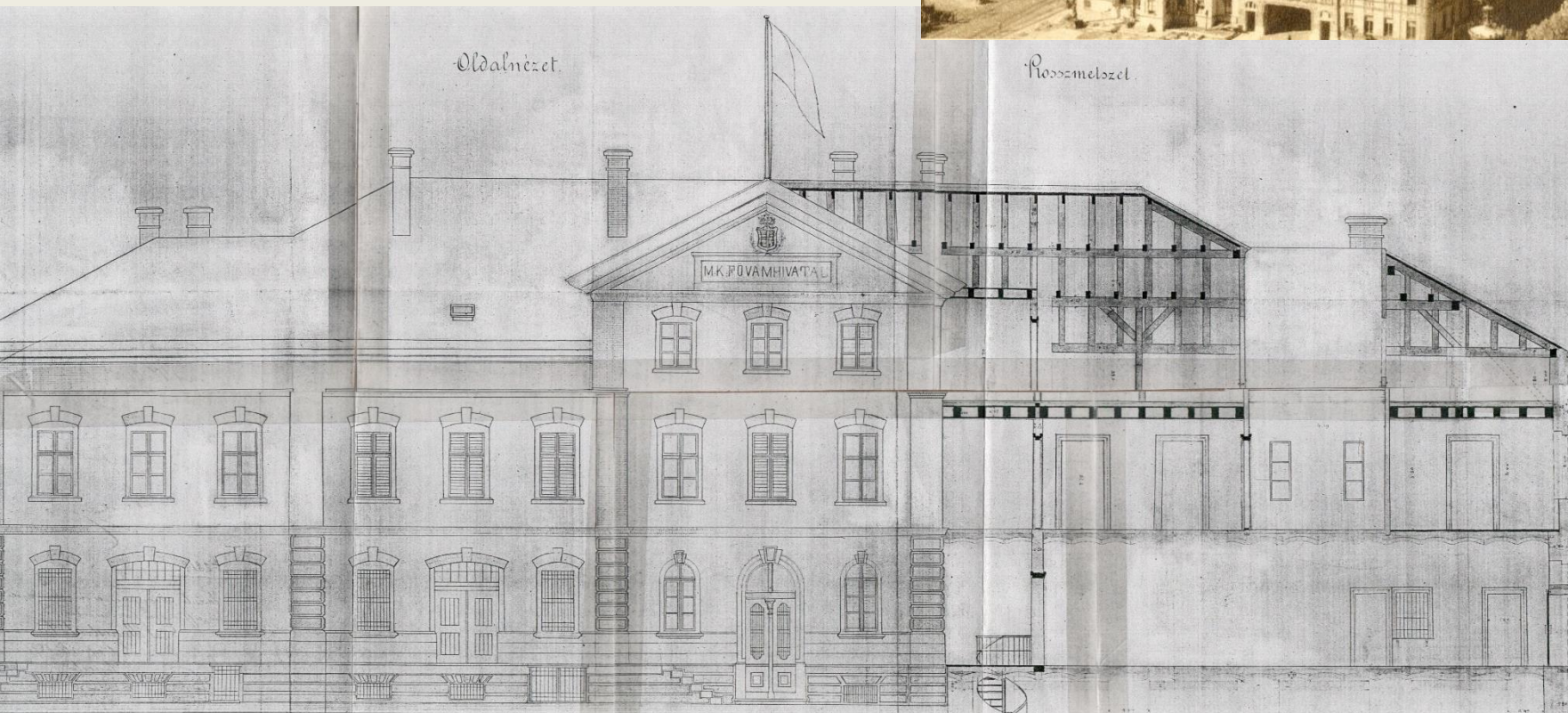


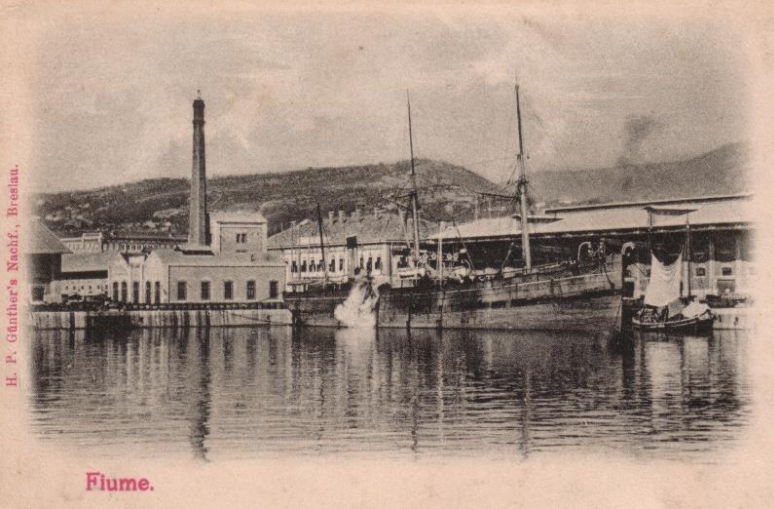


Placsek: Skladišta 8 i 11, Rudolfov gat, 1888.

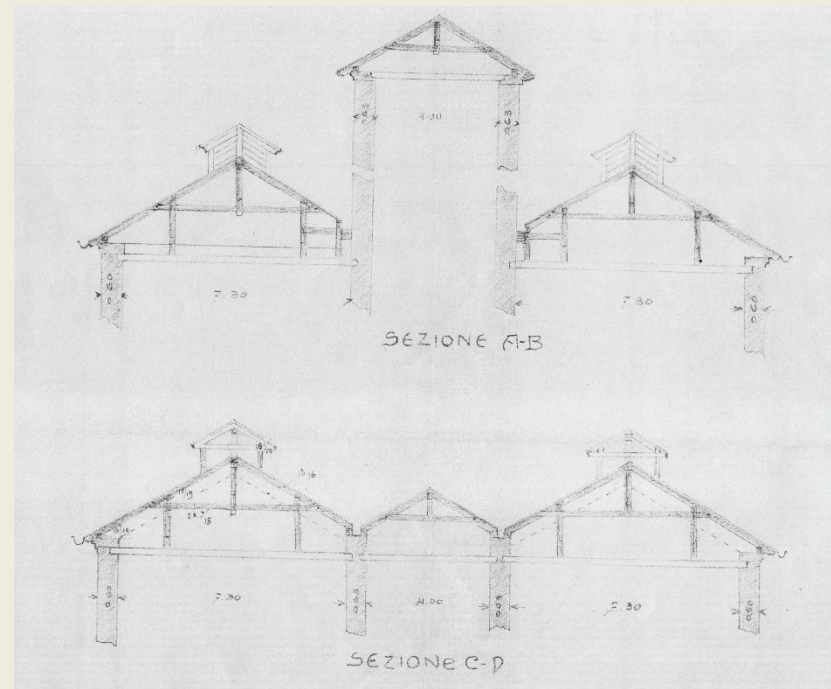
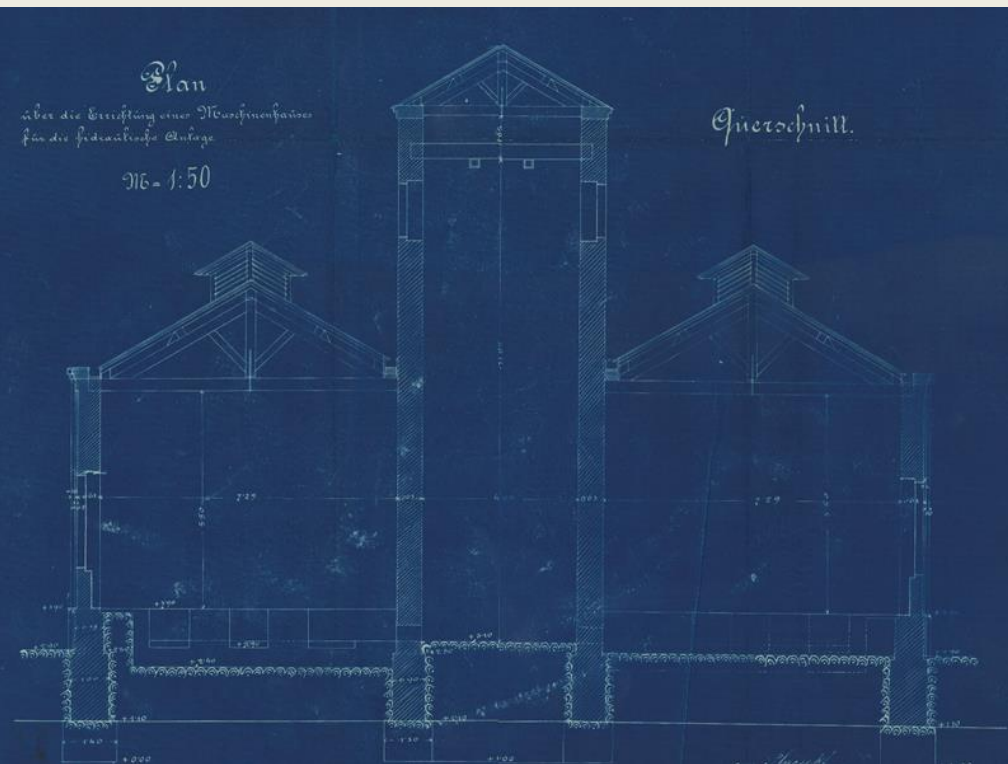
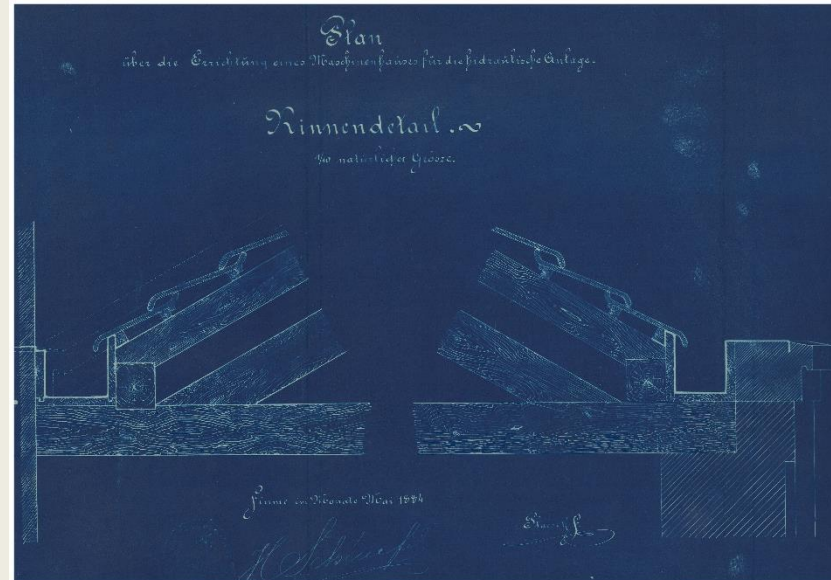


Glavna mađarska kraljevska
carinarnica, L. Egan, A. Hajnal,
1891.





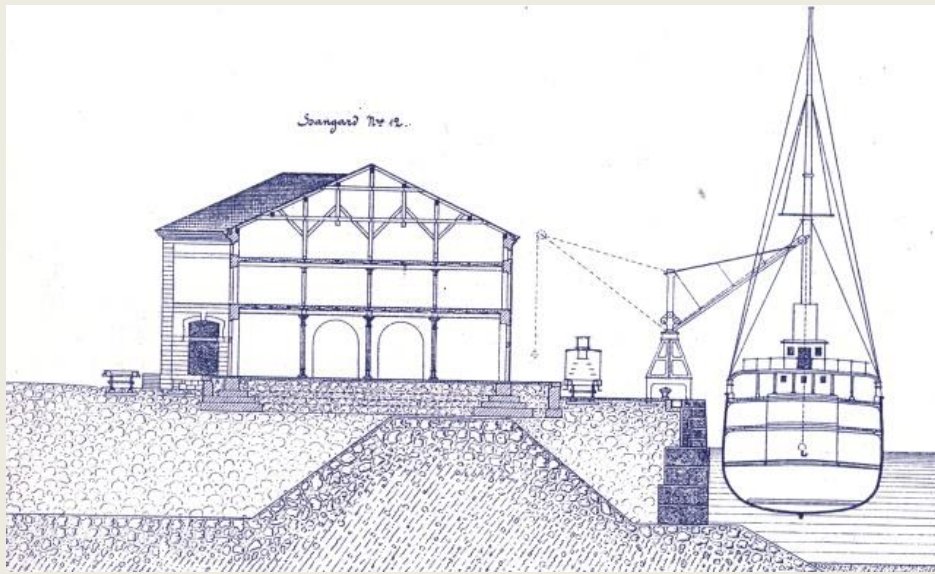
Placsek:
Strojarnica
za
hidrauličko
postrojenje,
Rudolfov
gat, 1884.



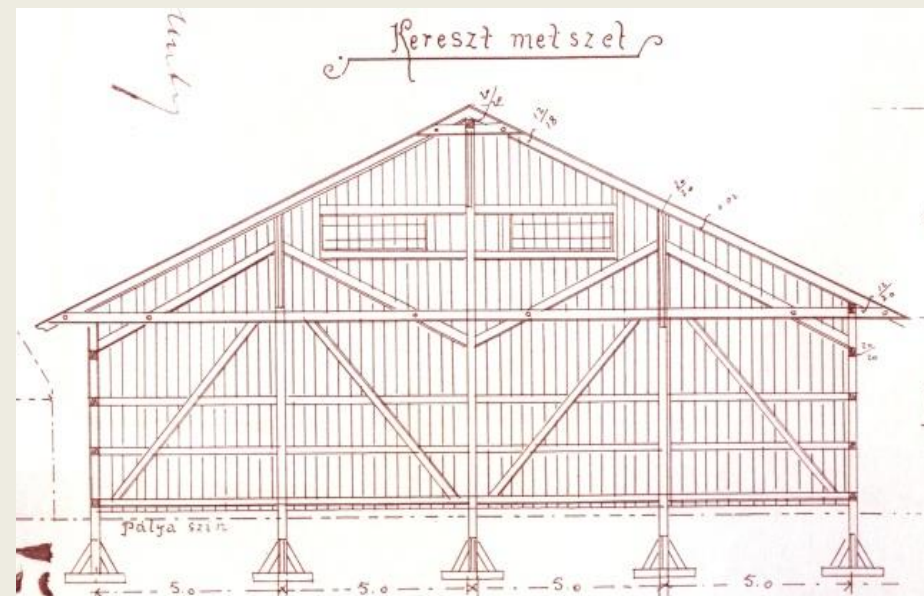
Povijesne drvene konstrukcije

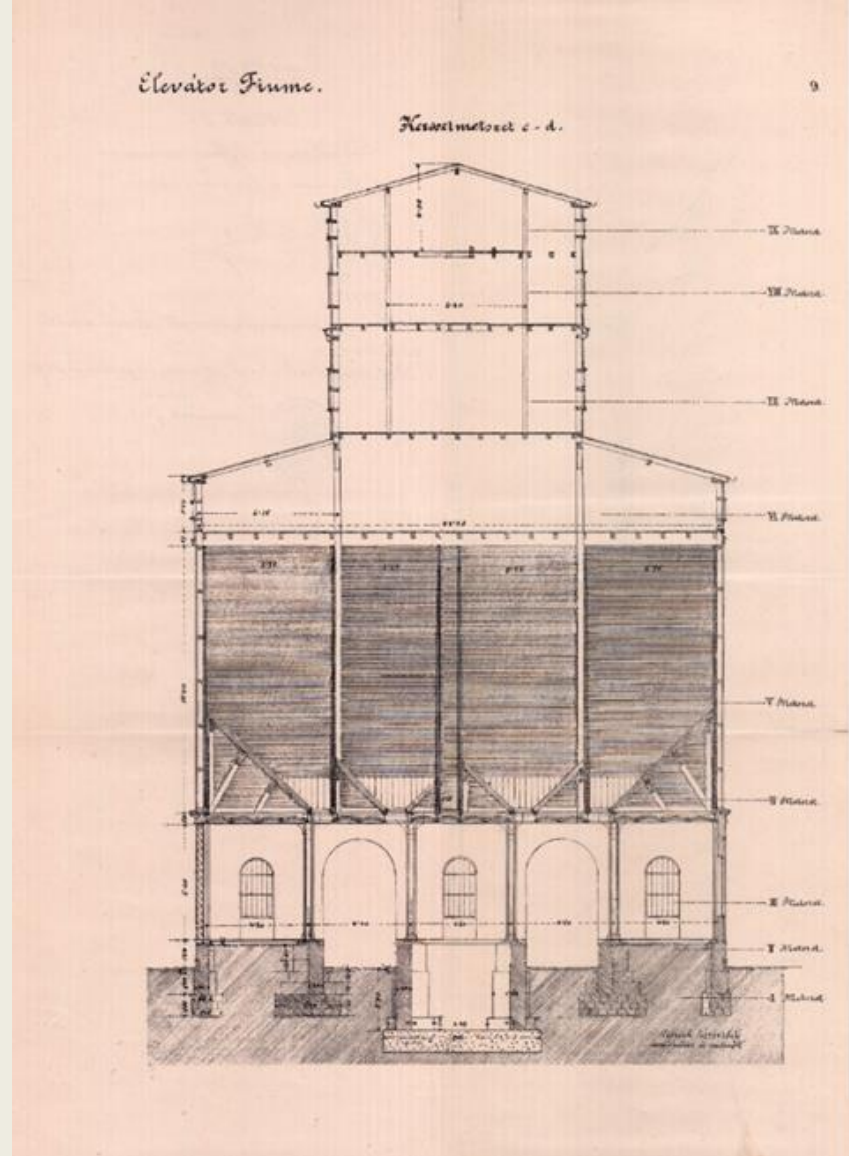
- Skeletne drvene zgrade
 - Privremena lučka skladišta (rana faza razvoja lučko-željezničke zone)
- Skeletna konstrukcija Žitnog silosa
- Kanatne zgrade / etaže zgrada
 - starog željezničkog kolodvora
 - Veslačkih klubova *Quarnero*, *Canottieri Fiumani* i *Liburnia* na zapadnom dijelu Lukobrana





Privremena skladišta



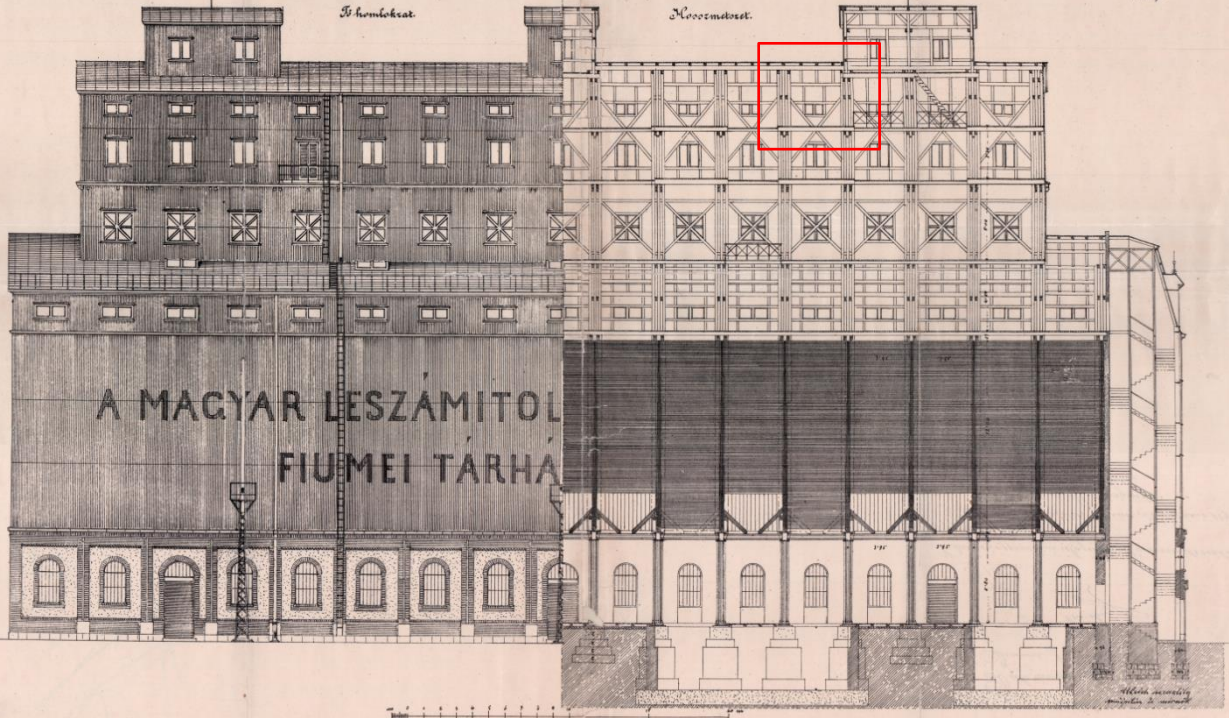


Christian Keresztily Ulrich: Žitni silos, 1890.

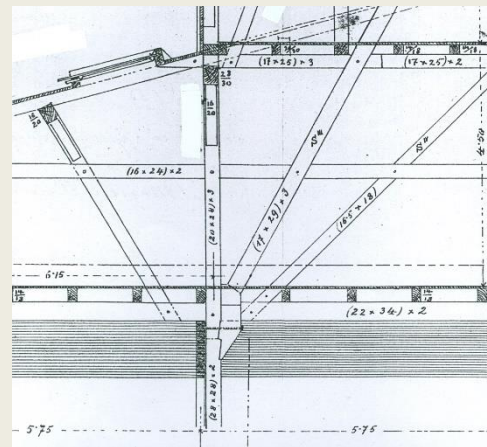
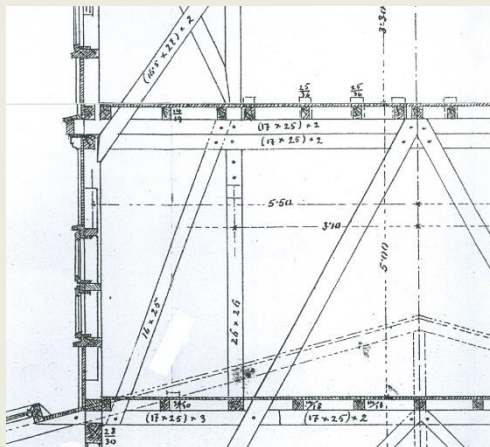
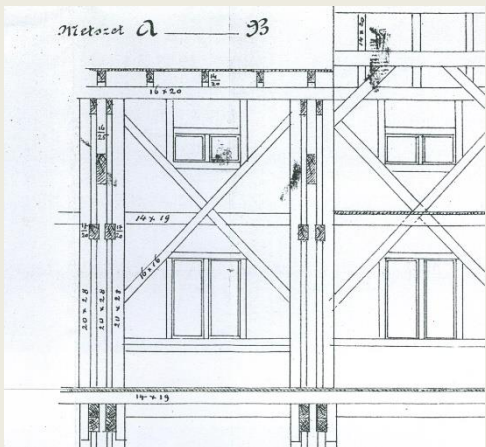
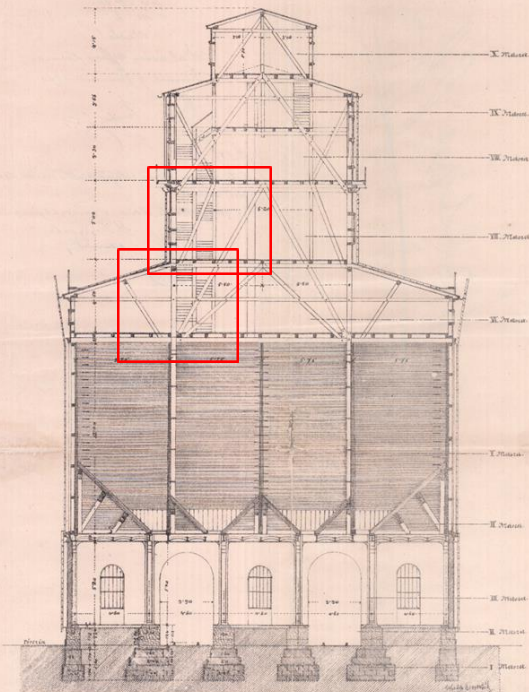
Észkelet felé

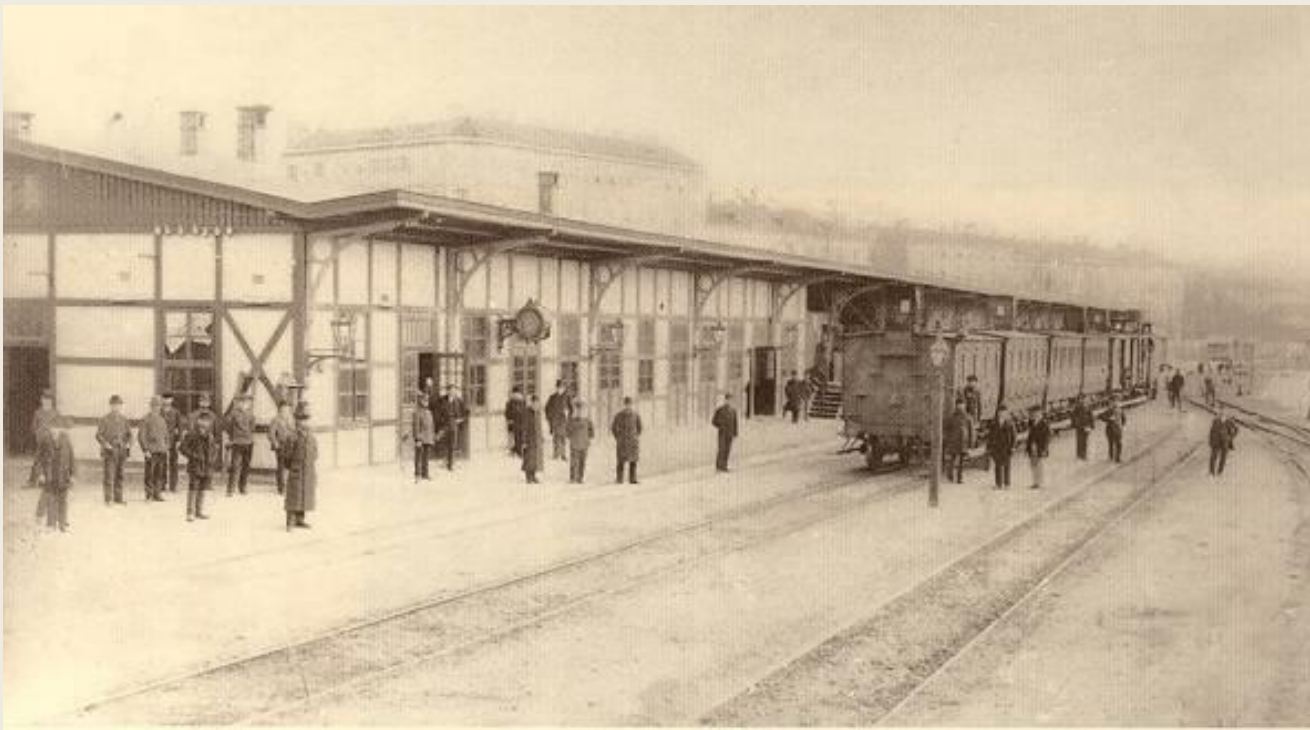
Délkelet felé

11. Lap.



Készletmérés a-b.



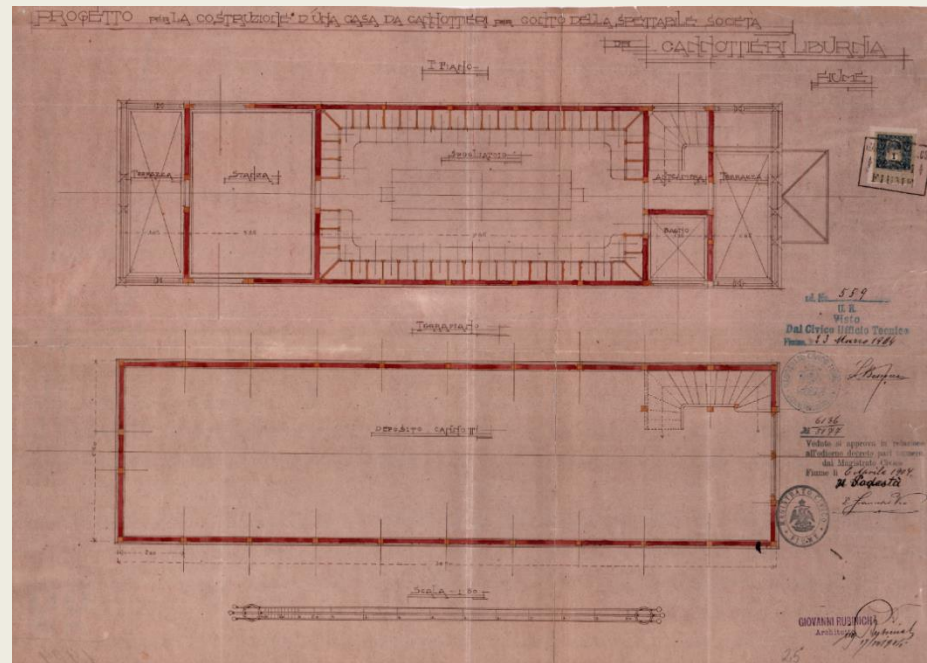
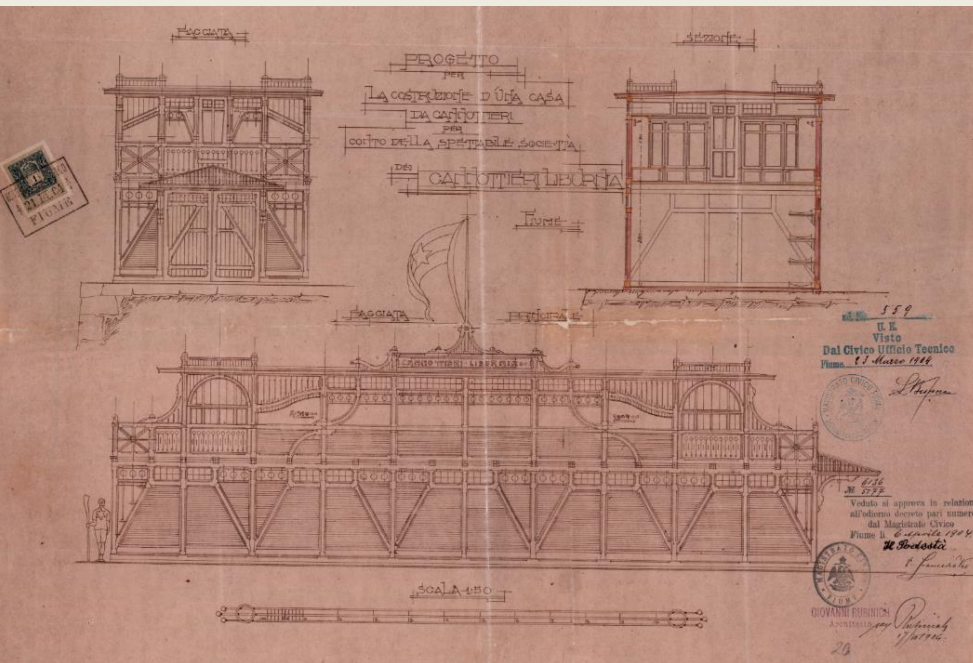


Stari željeznički kolodvor, 1873. - 1888.





Veslački klub Liburnia, G. Rubinich, 1904.



N. 5133
 Visto si approva in relazione
 all'ordine decreto pari numero,
 dal Magistrate Civico
 Fiume li 25/12/1904
 Il Segretario
 Francesco Vio



Quarnero osónakhoz Fiumeban
 "Disputa dei canotti della società Quarnero"
 1-100

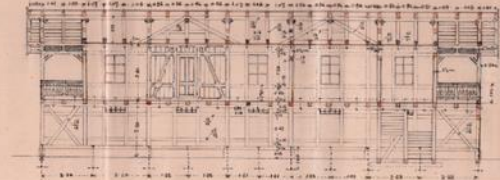
ad. No. 591
 U. E.
 Visto
 Dal Civico Ufficio Tecnico
 Fiume li 27 Agosto 1904



Hossznészet

Ütömnészet

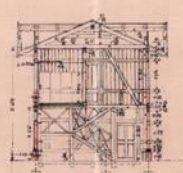
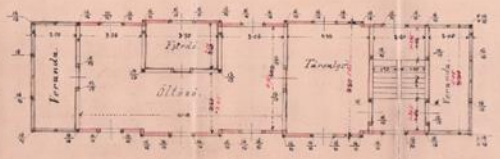
Hosszmetszet



Emelet

Netoszét

Földszint



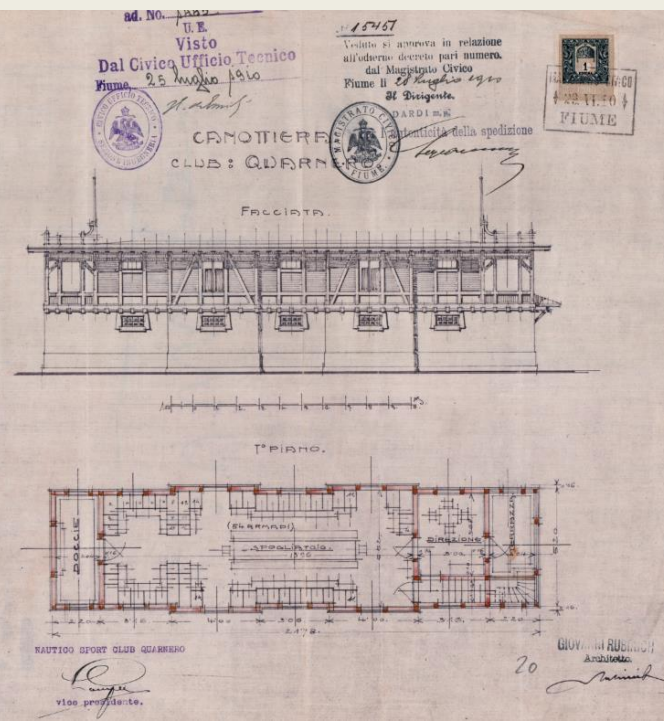
Alaprajz
 ad. No. 28

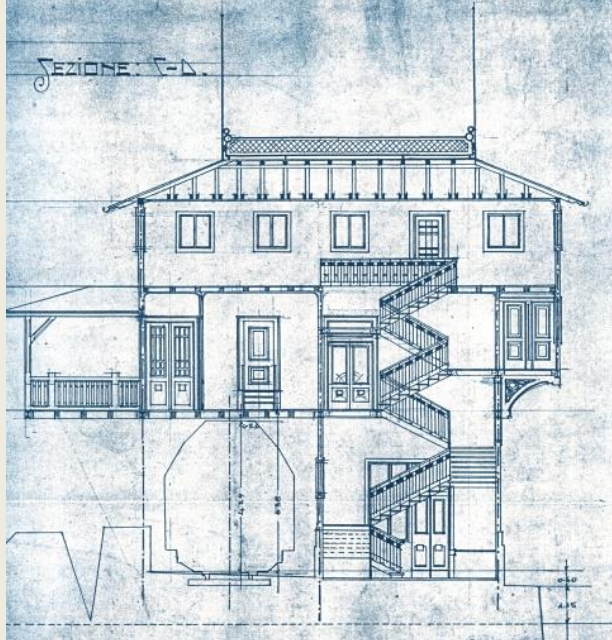
Veslački klub
 Quarnero
 (Kvarner),
 I. Berger
 1904.



www.lokalpatrioti-rijeka.com

Veslački klub
 Quarnero, G.
 Rubinich
 1910.





Kupalište Quarnero (Kvarner), L. Bescocca, L. Luppis, V. Celligoi,

